



ADAPT - 600 Floor Mounted Three Drawer Unit
Installation & Aftercare Instructions

Retain for future reference



Customer Services

Soakology, Unit 5, Brassmill Lane Enterprise Centre Brassmill Lane, Bath, BA1 3JN
t. 0845 862 9888 e. contact@soakology.co.uk w: www.soakology.co.uk

Part of Total Bathroom Enterprises Ltd
VAT No. 153612626 Company No. 8260845

ADAPT - 600 Floor Mounted Three Drawer Unit Installation & Aftercare Instructions

IMPORTANT

Wear suitable eye protection when drilling. Take care when using power tools near water - the use of a residual current device (RCD) is recommended. Beware of hidden pipes or cables. Take care when drilling tiled surfaces as the drill might slip. Use a piece of masking tape to prevent the drill from wandering.

Securing the Unit

It is recommended that all units and basins are secured to a suitably reinforced wall to ensure stability. The unit can be secured to the wall through the back upper brace. For plasterboard walls use specialist wall plugs along with supplementary wall strengthening.

Once the furniture unit is secured, plumb in the basin and secure to the unit using a silicone sealant (not provided).

Drawer Adjustment

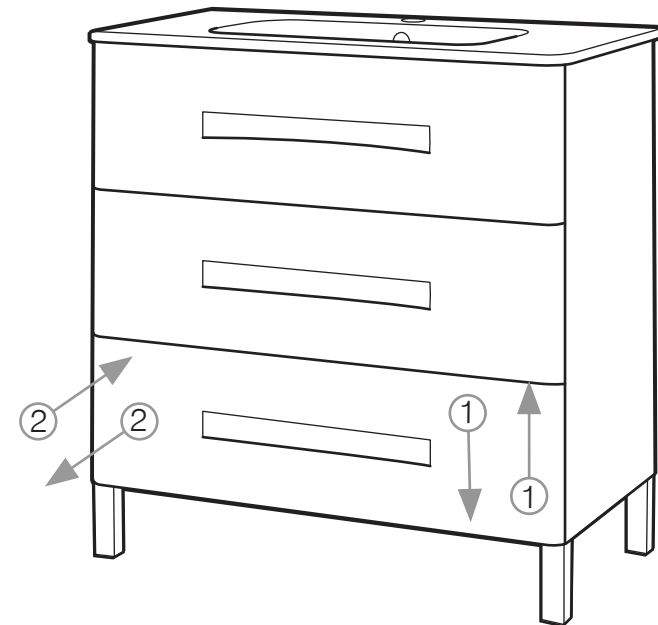
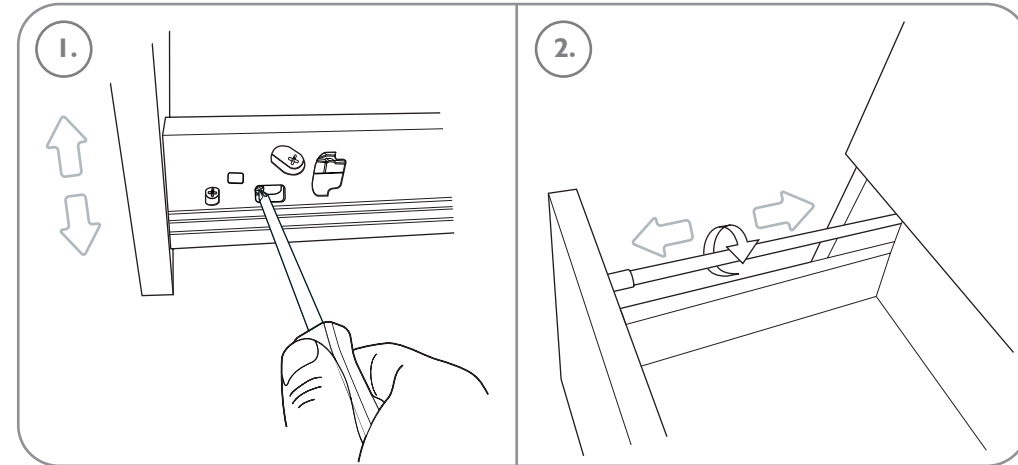
The unit has drawers which can be adjusted up and down as well as forward and backwards. To raise and lower the drawer front, first remove the plastic cover caps from the side of the drawer runner and turn the adjustment screw shown in (1.) To adjust the drawer front back and forward, adjust the arm on the drawer runner as shown in (2.)

Aftercare

We recommend that after use, you wipe away any water splashes or condensation from the furniture. Excessive exposure to water will deteriorate the furniture and can damage it. All bathrooms should be well ventilated with a suitable extractor fan. When cleaning, use a soft damp cloth only. Only use wax free polish if one must be used.

Do NOT scrub or scour the unit, or use any abrasive cleaning agents - if a proprietary cleaner is needed, test on an inconspicuous area first.

Should you require any replacement components for this product, please contact Soakology using the contact details below.



Customer Services

Soakology, Unit 5, Brassmill Lane Enterprise Centre Brassmill Lane, Bath, BA1 3JN
t. 0845 862 9888 e. contact@soakology.co.uk w: www.soakology.co.uk